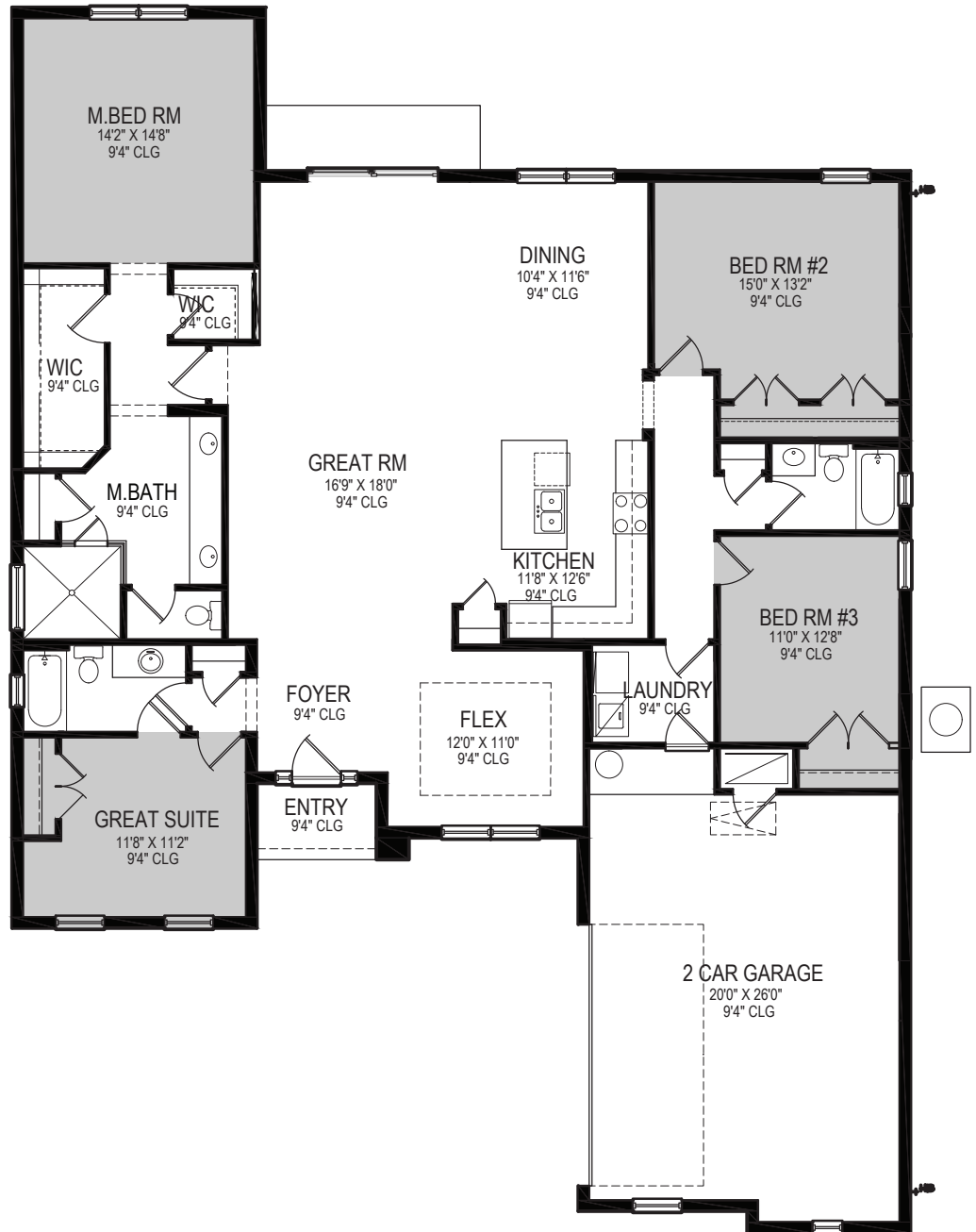


FLOOR PLAN | MODEL 2730

Palm Bay

Living 2,730 SF
Garage 579 SF
Entry 55 SF
TOTAL 3,364SF



3 Bedrooms • 3 Baths • Guest Suite • Great Room • Dining
Foyer • Flex • 2 Car Garage

All dimensions are approximate. Because we are always improving our homes, we reserve the right to substitute building materials, appliances and fixtures, like kind and quality, and to change features, options and architectural details without prior notice. Some models may be reversed from floor plan. Refrigerator, washer and dryer are shown for placement purposes only and are not included in sales price. Windows, ceiling and front porches may differ by elevation.

